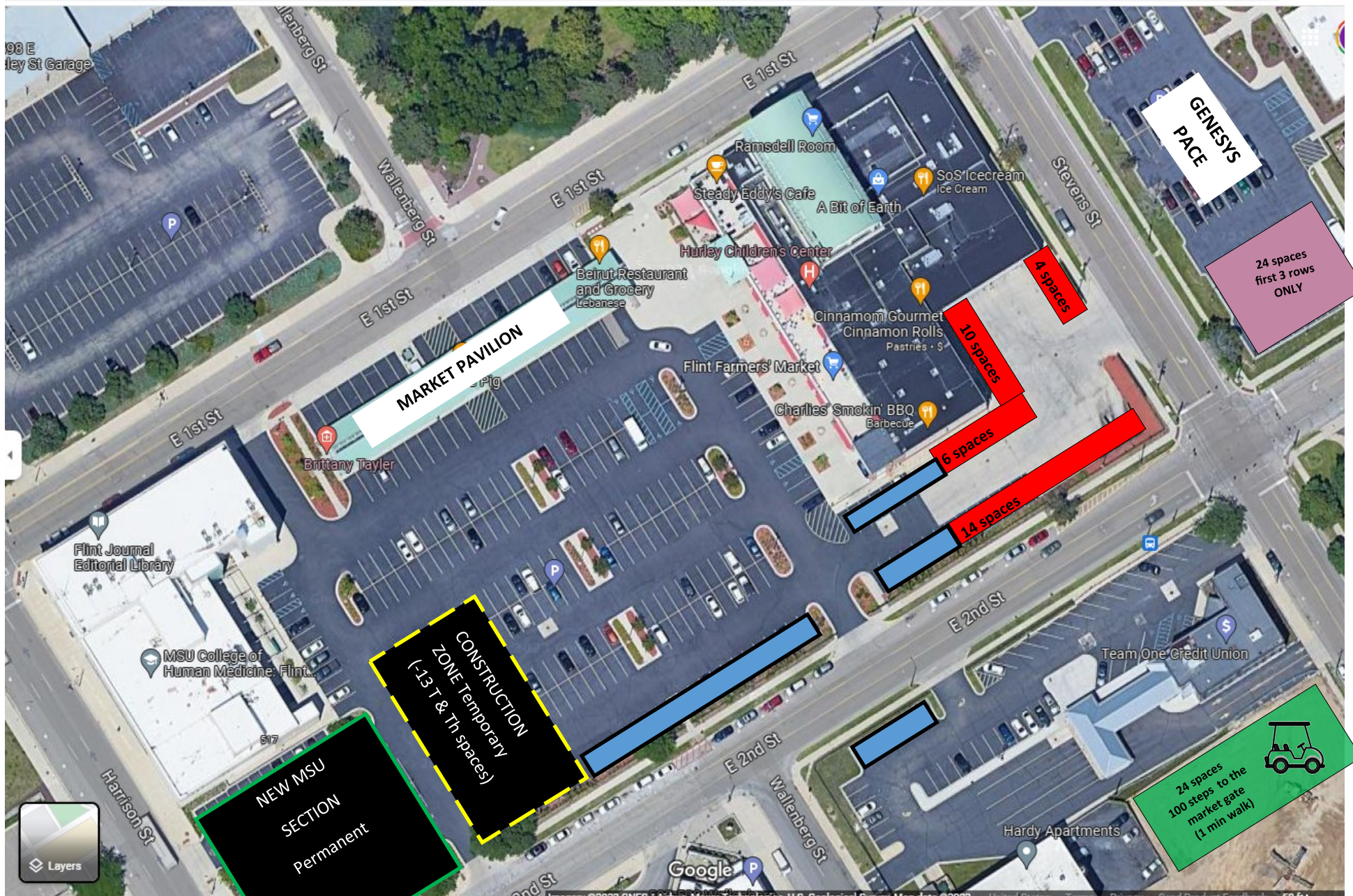


VENDOR PARKING ZONES



RED ZONE—early arrivals (before 8:00) or 60 + yrs old

PURPLE ZONE—8- 8:30 AM arrivals

GREEN ZONE—8:30-9:15 AM arrivals

BLUE ZONE—HURLEY T and TH—MARKET VENDORS ON SATURDAYS

Golf cart will run from 8 - 9 in green zone and again from 5:15-6:00 pm If you need to get out during the day just let any staff member know and we can run you over.